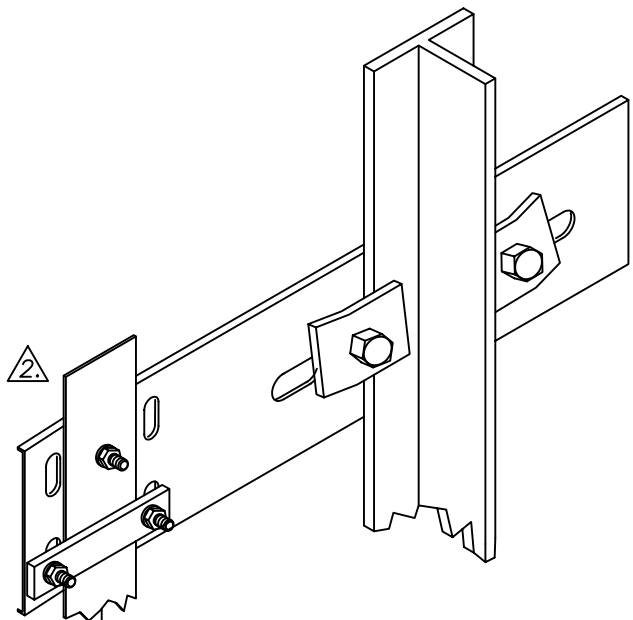


NOTE:

SENSORS ARE NOT INSTALLED TO AVOID DAMAGE DURING SHIPPING. INSTALL SENSORS IN PROPER LOCATIONS ACCORDING TO THE SENSOR LABEL. SENSORS MUST BE SET 1/8" TO 1/4" FROM THE MAGNET. (SEE PAGE 2, VIEW A)

**INSTALLATION PROCEDURE
FOR THE VMI MTS-102 CAR TOP LANDING CONTROL SYSTEM**

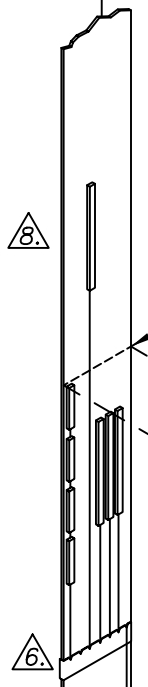
1. MOUNT VMI TAPE SELECTOR UNIT ON ELEVATOR CROSS HEAD WITH BRACKET.
 2. MOUNT TOP TAPE RAIL BRACKET AT VERY TOP OF RAIL AND FASTEN STEEL TAPE. NOTE: CHECK RUN BY CLEARANCE.
 3. WITH TAPE SECURED AT THE TOP TAPE RAIL BRACKET, RUN THE ELEVATOR DOWN WHILE UNROLLING THE TAPE.
 4. MOUNT BOTTOM TAPE RAIL BRACKET AND FASTEN STEEL TAPE, THEN ADJUST TENSION SETTING.
 5. ADJUST SELECTOR UNIT SO THAT SENSOR MOUNTING PLATE MOVES FREELY.
 6. SET ELEVATOR LEVEL AT THE FLOOR AND INSTALL THE LEVELING MAGNETIC STRIP, ALONG WITH THE NECESSARY DOOR ZONE MAGNET USING THE MAGNET SETTING TOOL. SEE PAGES 2 FOR FURTHER INFORMATION ON SETTING DOOR ZONE MAGNETS. SEE PAGE 3 FOR SETTING ABSOLUTE FLOOR ENCODING MAGNETS IF REQUIRED.
 7. CONTINUE TO INSTALL THE LEVELING MAGNETIC STRIPS AT EACH FLOOR.
 8. STEP DOWN DIRECTION MAGNETS:
IN THE DOWN SLOWDOWN ROW, MEASURE UP FROM THE CENTER OF THE LEVELING MAGNET STRIP THE REQUIRED SLOWDOWN DISTANCE SHOWN IN SPEED CHART AND ADJUST WITH THE MAGNET SETTING TOOL.
 9. STEP UP DIRECTION MAGNETS:
IN THE UP SLOWDOWN ROW, MEASURE DOWN FROM THE CENTER OF THE LEVELING MAGNET STRIP THE REQUIRED SLOWDOWN DISTANCE SHOWN IN SPEED CHART AND ADJUST WITH THE MAGNET SETTING TOOL.
 10. CONTINUE TO INSTALL THE SLOWDOWN MAGNETIC STRIPS AT EACH FLOOR.
- *** ANY TENSION ADJUSTMENT MUST BE DONE ON THE BOTTOM TAPE RAIL BRACKET, NEVER AT THE TOP TAPE RAIL BRACKET. ***



DRAWINGS ARE SHOWN WITH
ABSOLUTE FLOOR ENCODING(AFE):

FOR STANDARD SELECTOR SET-UP
SEE PAGE 2.

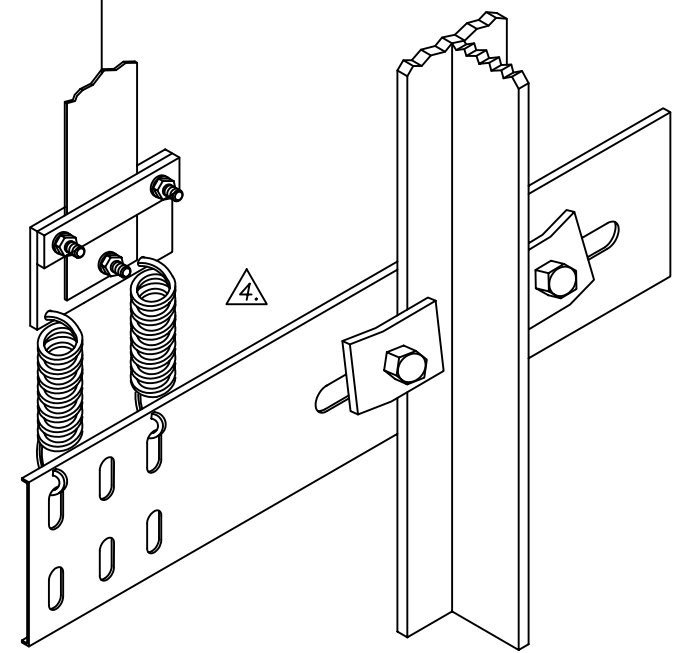
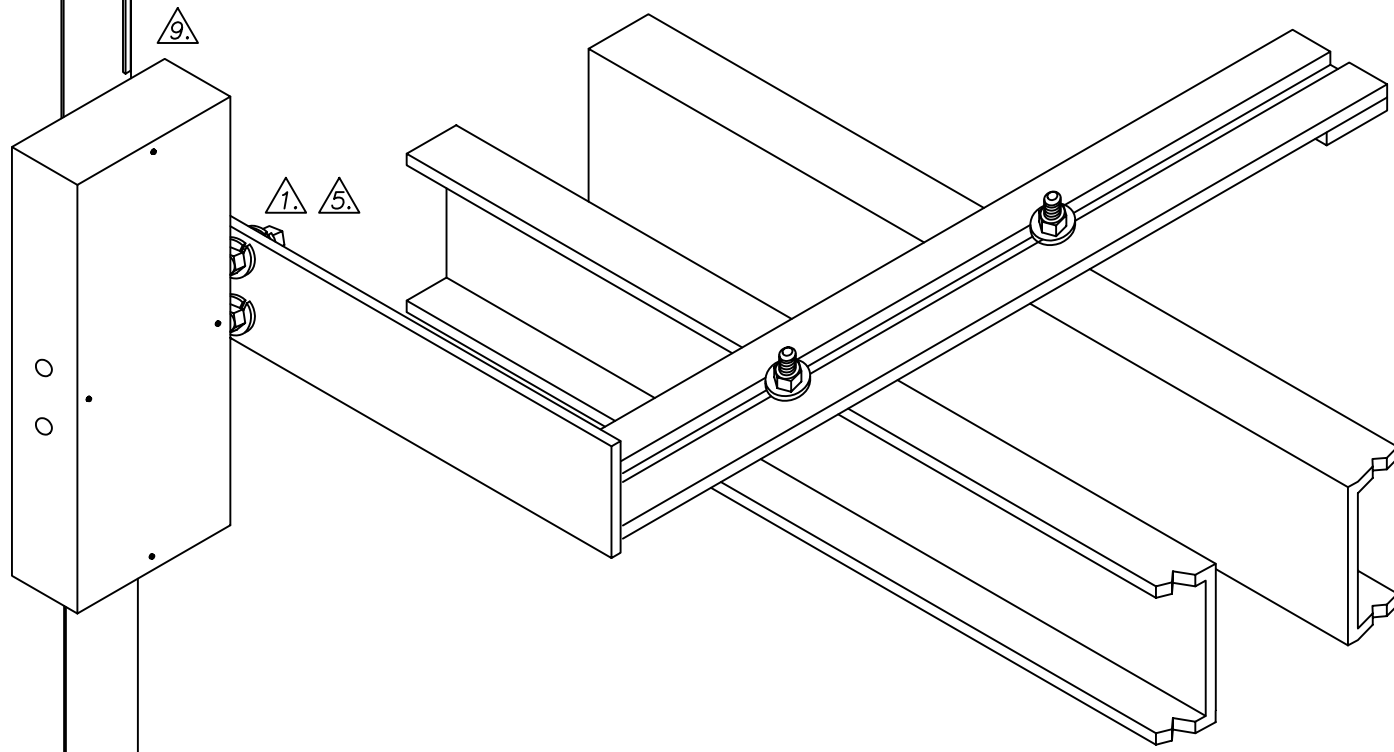
FOR (AFE) SELECTOR SET-UP
(2000 HARMONIZED CODE)
SEE PAGE 3.



DRAW LINE ON TAPE EVEN WITH
TOP OF SELECTOR BOX WHEN CAR
IS LEVEL AT FLOOR:

SET TOP EDGE OF MAGNET
GAUGE TO LINE.

SHOWS SENSOR POSITION AND
THE END POINTS OF EACH
MAGNET.



REAR DOOR ZONE SENSOR IS NOT
REQUIRED ON STAGGERED VHC102
FREIGHT CONTROLLERS AND VCS1
CONTROLLERS.



VERTITRON MIDWEST, INC.

VMI MTS-102 TAPE SELECTOR
PACKAGE ASSEMBLY

JOB:

CUSTOMER:

DRAWN BY: DWL

CHECKED BY: JH

DATE:

REV: A

VMI JOB:

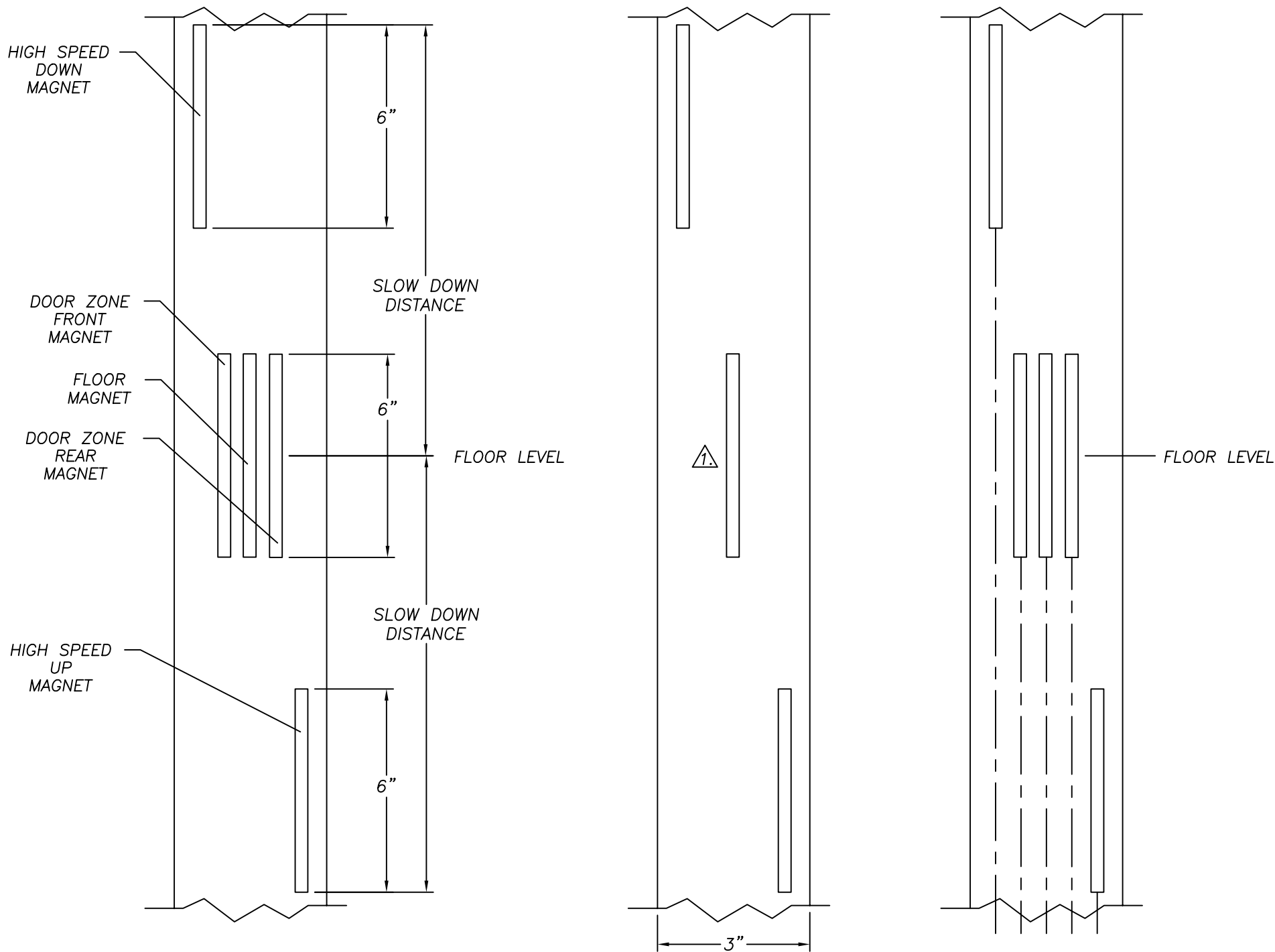
DWG NO.

SHEET: 1 OF 4

DETAIL "B"
NOT TO SCALE

DETAIL "C"
NOT TO SCALE

DETAIL "D"
4 SENSORS
NOT TO SCALE



NOTES:

1 IF THERE IS NO REAR OPENING, PLACE THE DOOR ZONE SENSOR IN THE CENTER LANE BETWEEN THE LU AND LD SENSORS. SEE DETAIL "C"
THE SAME MAGNET WILL ACTIVATE THE LU, LD AND DZ SENSORS.

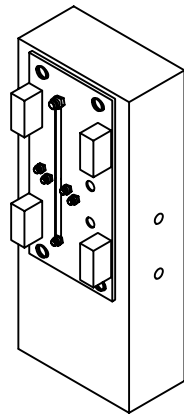
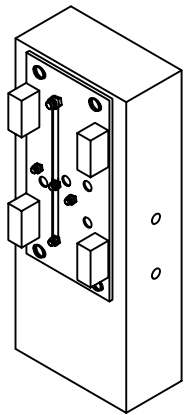
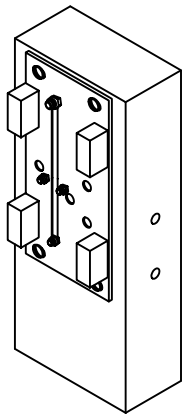
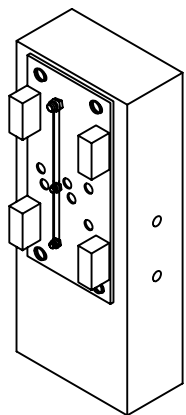
2 ABSOLUTE FLOOR ENCODING ONLY USED WITH 2000 HARMONIZED CODE.

3 SENSORS
TWO FLOORS
NO REAR OPENING

4 SENSORS
TWO FLOORS
FRONT/REAR OPENINGS

5 SENSORS
HI-SPEED UP/DOWN
NO REAR OPENING

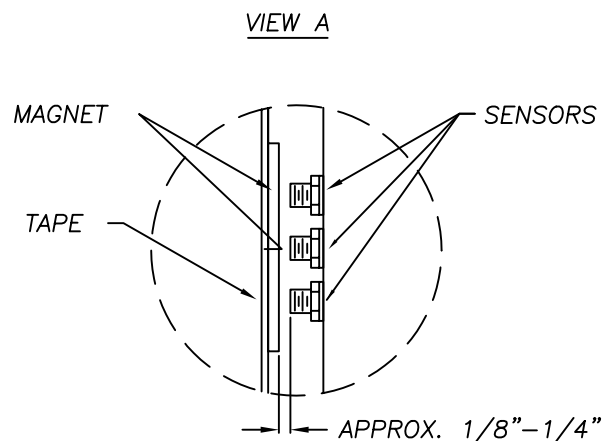
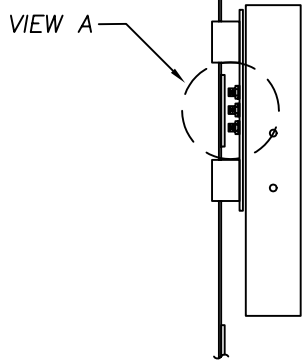
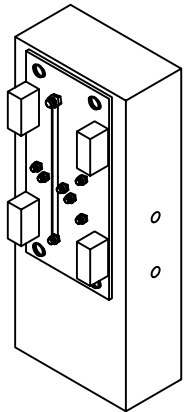
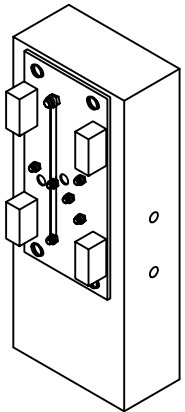
6 SENSORS
HI-SPEED UP/DOWN
FRONT/REAR OPENINGS



CAR SPEED CHART	
CAR SPEED	SLOW DOWN DISTANCE
50 FPM	12"
75 FPM	18"
100 FPM	24"
125 FPM	30"
150 FPM	36"
175 FPM	42"
200 FPM	48"

9 SENSORS
ABSOLUTE FLOOR ENCODING
NO REAR OPENING

10 SENSORS
ABSOLUTE FLOOR ENCODING
FRONT/REAR OPENINGS



VMI

VERTITRON MIDWEST, INC.

VMI MTS-102 TAPE SELECTOR
PACKAGE ASSEMBLY

JOB:

CUSTOMER:

DRAWN BY: DWL

CHECKED BY: JH

DATE:

REV: A

VMI JOB:

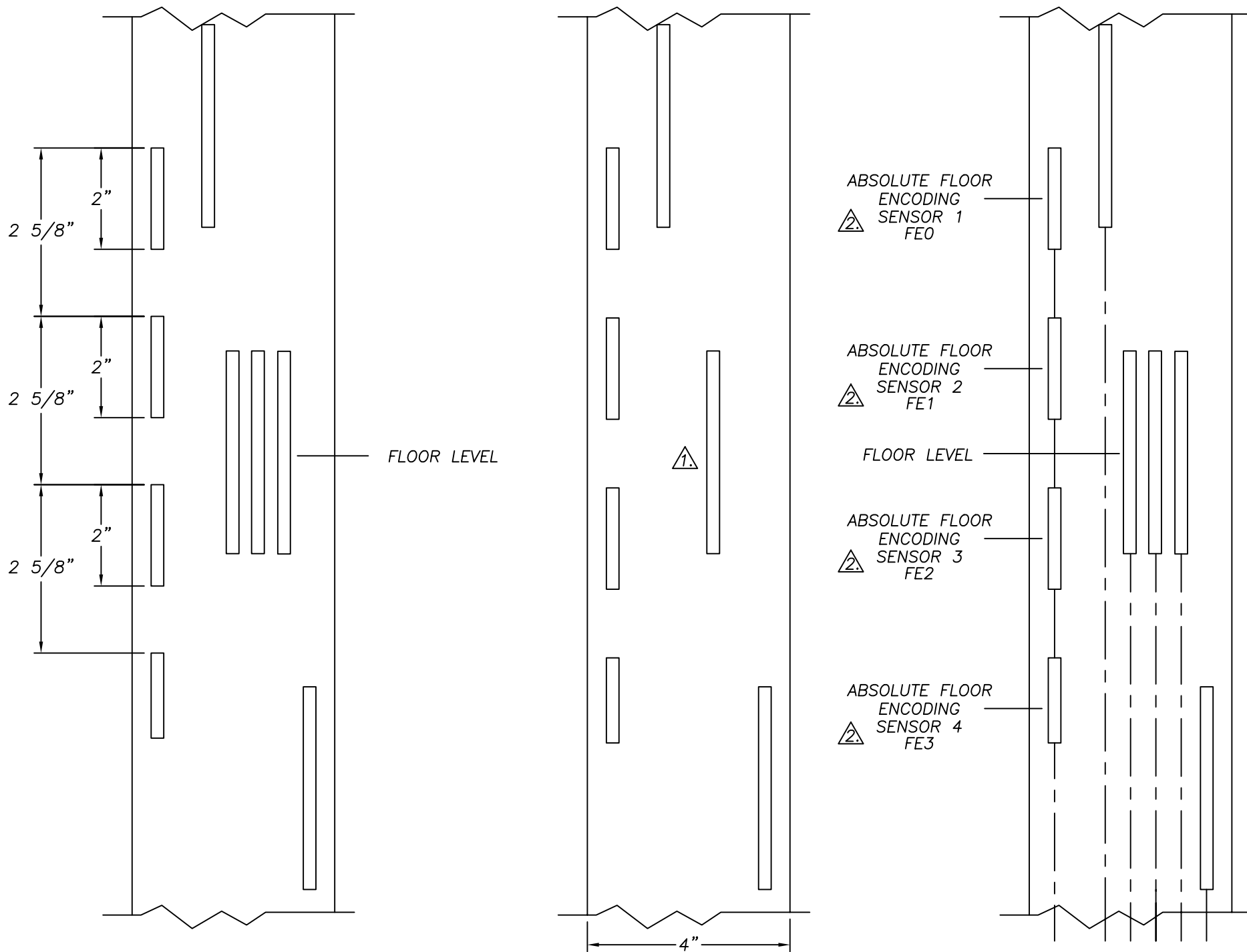
DWG NO.

SHEET: 2 OF 4

DETAIL "E"
NOT TO SCALE

DETAIL "F"
NOT TO SCALE

DETAIL "G"
10 SENSORS
NOT TO SCALE



NOTES:

- ⚠ IF THERE IS NO REAR OPENING, PLACE THE DOOR ZONE SENSOR IN THE CENTER LANE BETWEEN THE LU AND LD SENSORS. SEE DETAIL "F" THE SAME MAGNET WILL ACTIVATE THE LU, LD AND DZ SENSORS.
- ⚠ ABSOLUTE FLOOR ENCODING ONLY USED WITH 2000 HARMONIZED CODE.

FLOOR ENCODING
(BINARY COUNTING)

	1ST FLOOR	2ND FLOOR	3RD FLOOR	4TH FLOOR	5TH FLOOR	6TH FLOOR	7TH FLOOR	8TH FLOOR	9TH FLOOR	10TH FLOOR	11TH FLOOR	12TH FLOOR	13TH FLOOR	14TH FLOOR	15TH FLOOR
SENSOR 1 MAGNET CIRCUIT BOARD INPUT FE0	█		█		█		█		█		█		█		█
SENSOR 2 MAGNET CIRCUIT BOARD INPUT FE1		█	█			█	█			█	█			█	█
SENSOR 3 MAGNET CIRCUIT BOARD INPUT FE2				█	█	█	█					█	█	█	█
SENSOR 4 MAGNET CIRCUIT BOARD INPUT FE3								█	█	█	█	█	█	█	█



VERTITRON MIDWEST, INC.

VMI MTS-102 TAPE SELECTOR
PACKAGE ASSEMBLY

JOB:

CUSTOMER:

DRAWN BY: DWL

CHECKED BY: JH

DATE:

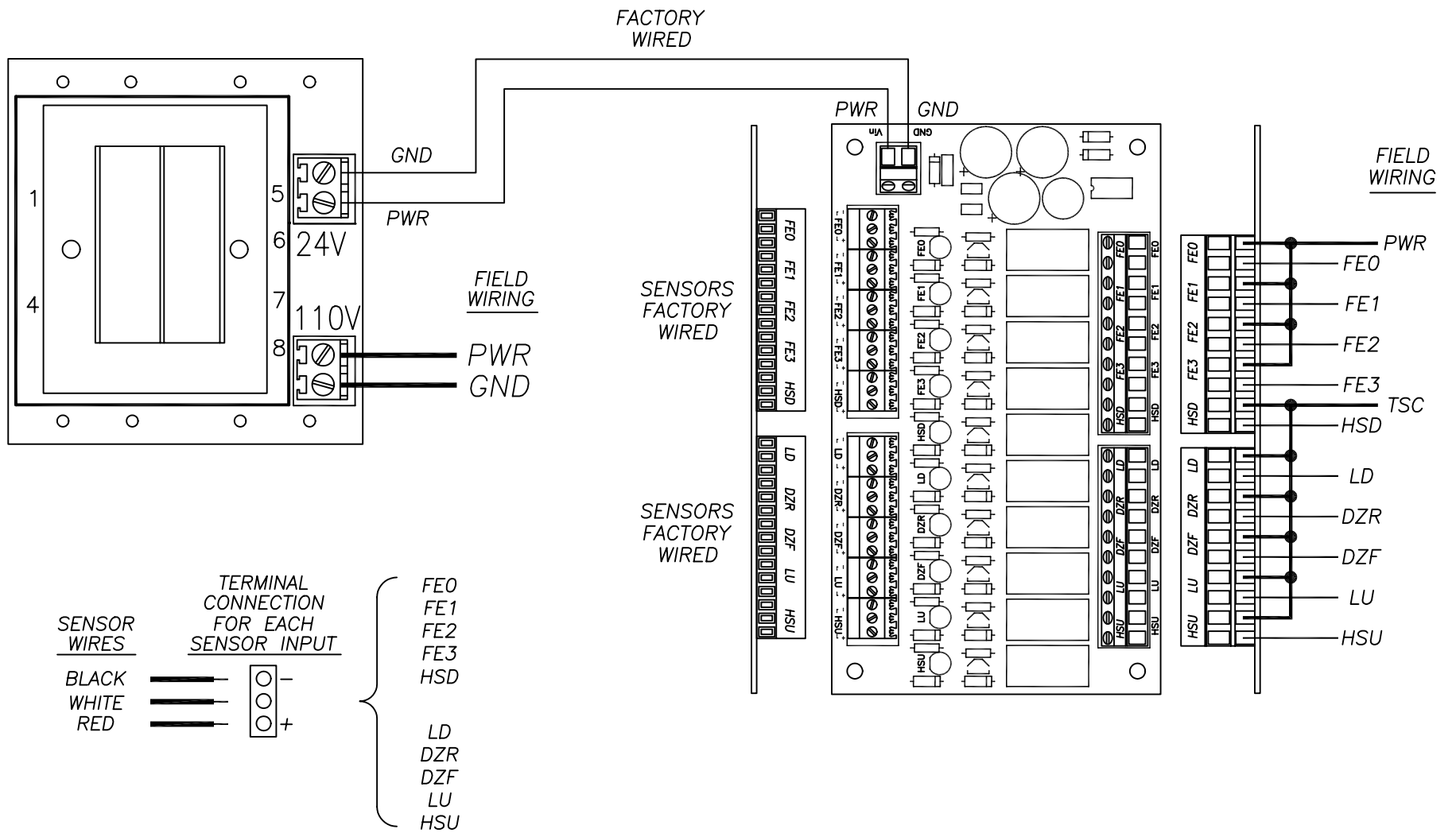
REV: A

VMI JOB:

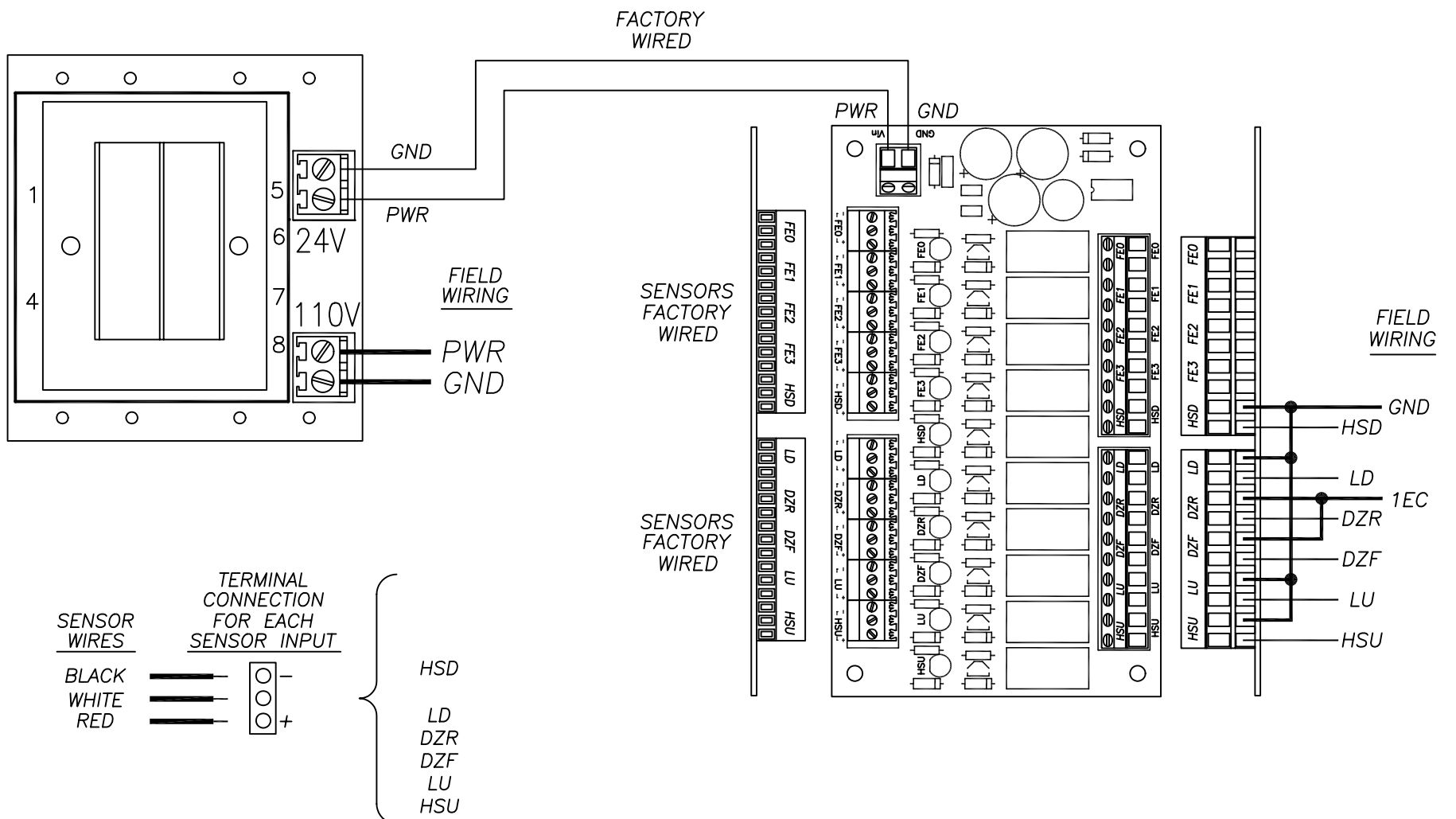
DWG NO.

SHEET: 3 OF 4

FOR VMI's VHC-102 2000 CODE CONTROLLER ONLY



FOR VMI's VCS1 CONTROLLER ONLY



VMI

VERTITRON MIDWEST, INC.

VMI MTS-102 TAPE SELECTOR
PACKAGE ASSEMBLY

JOB:

CUSTOMER:

DRAWN BY: DWL

CHECKED BY: JH

DATE:

REV: A

VMI JOB:

DWG NO.

SHEET: 4 OF 4